



PotPerch™ Installation and Use Instructions

Your PotPerch is part of an initial production run. PotPerch is 3D-printed using polylactic acid and certain other materials. As a new product, it is subject to risks that may emerge and evolve over time.

We are eager to hear from you. If you have any questions about installation, use, and maintenance of your PotPerch, please contact support@verdantville.com

Please read carefully and follow all instructions accompanying your PotPerch to ensure its safe and correct installation, use, and maintenance. Failure to follow these instructions could result in a failure of your PotPerch and damage to walls, floors, and other items.

1. Before you start, make sure the wall is solid and free from hidden pipes or electrical cables where you plan to insert the screws or nails needed to hang PotPerch.

2. Your PotPerch includes: a Frame, a Core, one or more Pot Holders, and one or more SipStations™ for your plants. We have provided some fasteners that may work for your wall.

3. You will need fasteners suitable for your wall. Drywall anchors are included, but we recommend fastening your PotPerch to at least one timber wall stud.

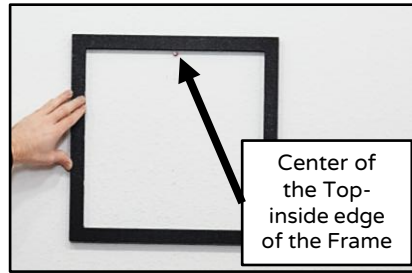
4. To mount your PotPerch level you will need a screwdriver (or hammer if using nails). A tape measure, pencil, level, and safety glasses can help.



5. Choose a wall that can safely carry the weight of your PotPerch and your plants, and with enough light for the plant type(s) you plan to use. Use the correct anchors for your wall type (for example, brick, concrete, or plasterboard, timber wall studs). If you are unsure what kind of wall you have or how to fix into it safely, check with a competent person before continuing.

6. Clear the area, protect the floor with a sheet or cardboard. Ask for help lifting or installing the system.

7. To position your PotPerch, hold the Frame against the wall in the desired location. You may use a push pin to hang the Frame while you can confirm the location. You may also use the “View on My Wall” feature on our website.

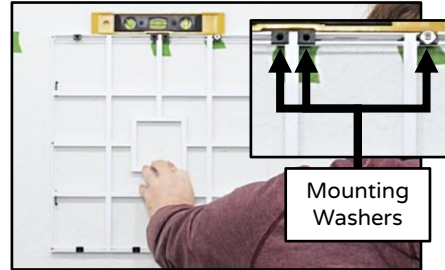


8. Find the wall studs on either side of your location. A stud finder can help...



9. Use the pencil to mark the center of the top-inside edge of the Frame.

10. Check the Core is rotated correctly and the Mounting Washers are at the top and bottom.

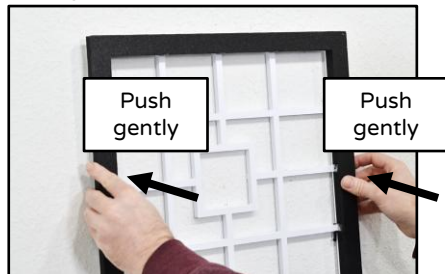


11. Use a level to ensure the Core is straight. Mark the desired hole locations with a pencil, or the point of a nail placed through one of the Mounting Washers. The Mounting Washers slide and may be repositioned. Repositioning allows fasteners to be lined up with wall studs and provides some additional adjustment of the horizontal location.

12. Once the location is acceptable, drill pilot holes at the marked points and insert the appropriate fasteners / wall anchors.

13. Tighten all mounting screws firmly – preferably by hand – and do not overtighten; overtightening will damage the Mounting Washers, Core, and your wall.

14. Once the Core is securely attached to the wall, slide the Frame onto the Core. Ensure the top of the Core and Frame are aligned.



View on My Wall

Use your phone to find the perfect Perch Place.



Installation Video

Watch how to install your PotPerch.

<https://guides.verdantville.com/PotPerch/Sprout/Setup/>



Digital Written Instructions

A digital copy of the current instructions.

guides.verdantville.com/PotPerch/Sprout/Written_Instructions/PotPerchSproutIFU.pdf



Cautions:

Weight Limits: Do not exceed the maximum weight stated for your PotPerch, including water, wet soil, and fully grown plants.

- 24”/60 cm PotPerch:
 - Max Capacity: 17 lb (7.7 kg)
 - No single pot should exceed 4lbs (1.8kg)
- 15.75”/40 cm PotPerch:
 - Max Capacity: 8 lb (3.6 kg)
 - No single pot should exceed 2lbs (0.9kg)
- 12”/30 cm PotPerch:
 - Max Capacity: 5 lb (2.3 kg)
 - No single pot should exceed 0.5lbs (0.2kg)

Choking Hazard: PotPerch is not a toy and contains small parts. Please keep it out of reach of young children.

Do not climb/hang on you PotPerch. Your PotPerch is not a climbing frame.

Correct Attachment: Failure to use the correct fasteners and mounting methods will damage your PotPerch, and may result in damage to surfaces and items near you PotPerch.

For indoor use only: The use of environmentally friendly materials means the ideal temperature range for your PotPerch is 68°F - 77°F (20°C - 25°C). Avoid the cold and heat from direct sunlight, space heaters, fire places, etc. that exceed this temperature range.

Keep away from fire: The use of environmentally friendly materials means you PotPerch can catch fire. Do not place open flames within 12” (30 cm) of you PotPerch. Avoid high temperatures.

Water egress: Do not overfill your Containers. Watch the float when adding water. The Containers allow water to escape when overfilled, which protects your plants. Do not leave or place Containers on or above wood or other surfaces susceptible to water.

NOT dishwashers safe: Do not put your SipStation or other parts of your PotPerch in the dish washer. Wash parts by hand using hand soap and water then allow them to air dry.

Allergens / Latex: Your PotPerch and SipStations are not known to contain latex or toxic materials.

Growing food: When growing plants for consumption, consider using a food-safe, secondary liner inside the lift-and-swap insert.

EXCEPT AS REQUIRED BY LAW, YOUR POTPERCH AND ALL ACCOMPANYING MATERIALS ARE PROVIDED “AS IS” AND “WITH ALL FAULTS.” TO THE MAXIMUM EXTENT PERMITTED BY WASHINGTON LAW, VERDANTVILLE DISCLAIMS ALL WARRANTIES, EXPRESS OR IMPLIED, INCLUDING ANY IMPLIED WARRANTIES OF MERCHANTABILITY AND FITNESS FOR A PARTICULAR PURPOSE, AND ANY WARRANTIES ARISING FROM COURSE OF DEALING OR USAGE OF TRADE. IF AND TO THE EXTENT ANY IMPLIED WARRANTIES MAY NOT BE DISCLAIMED, THEIR DURATION IS LIMITED TO THE SHORTEST PERIOD PERMITTED BY LAW.

TO THE MAXIMUM EXTENT ALLOWED BY APPLICABLE LAW, TOTAL LIABILITY FOR ANY CLAIM ARISING OUT OF OR RELATED TO THE POTPERCH, INCLUDING ITS INSTALLATION, USE, AND MAINTENANCE IS LIMITED TO THE PURCHASE PRICE YOU PAID FOR YOUR POTPERCH. TO THE FULLEST EXTENT PERMITTED BY LAW, VERDANTVILLE WILL NOT BE LIABLE FOR ANY INDIRECT, INCIDENTAL, SPECIAL, CONSEQUENTIAL, OR PUNITIVE DAMAGES (INCLUDING LOSS OF PROFITS, LOSS OF USE, OR OTHER ECONOMIC LOSS) ARISING OUT OF OR RELATED TO THE USE OF OR INABILITY TO USE YOUR POTPERCH. THIS DISCLAIMER AND LIMITATION DO NOT APPLY WHERE PROHIBITED BY WASHINGTON LAW, INCLUDING TO LIABILITY THAT CANNOT BE LIMITED FOR PERSONAL INJURY IN THE CASE OF CONSUMER GOODS, FOR GROSS NEGLIGENCE OR WILLFUL MISCONDUCT, OR OTHERWISE AS PROHIBITED BY APPLICABLE LAW.



PotPerch™ Installation and Use Instructions

Installation Video

Watch how to install your PotPerch.

<https://guides.verdantville.com/PotPerch/Sprout/Setup/>



9. Add your Pot Holders

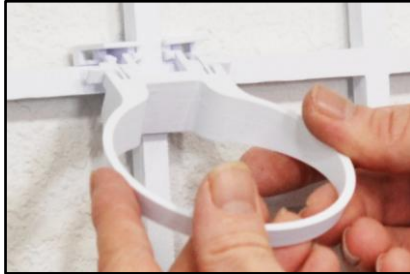
10. Remove the Pot Holder Clips from the Pot Holder Ring

11. Rotate the Pot Holder Clips so they are flat with wall.

12. Slide the Clips downwards, behind the back of the horizontal Core beams.

13. Rotate both Clips so that the Clip Prongs are pointing towards you.

14. Gently push the Pot Holder Ring onto the Clips. Ensure the Clip Prongs align with the holes in the back of the Ring.



15. Ensure the Ring is locked in place by gently pushing the Ring Lock Arms towards the wall. Do not force the Ring Lock Arms or they may break.



16. Check the Ring is secured by gently pushing on the Core with one hand and pulling on the front the Ring away from the wall with the other hand. If the Ring is installed correctly, the Clips will hold the Ring in place.



17. Once all the Pot Holders are installed correctly, gently place an empty SipStation into the Pot Holder.

18. Once the SipStation is stable, check the Ring is still retained by the Clips. Next, hold the bottom SipStation and gently insert the Lift-and-Swap Insert holding your plant. Check the cotton wicks are pointing down and do not catch on the inside of the SipStation.



19. Gradually let go of the SipStation. If the Ring is installed correctly, your plant will now hang from the Core.

20. Repeat the Pot Holder installation steps for any remaining Pot Holders and SipStations. It is easier to start with the bottom Pot Holders, and work upwards.



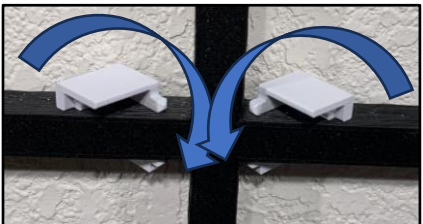
Maintenance:

You PotPerch should deliver years of plant support, if maintained following these steps:

Follow the installation instructions. Do not expose your PotPerch to excessive light or temperatures. Do not overload your PotPerch. Do not use aggressive cleaning chemicals – small amounts of soap and water applied with a cloth are recommended to keep PotPerch clean.

Over time, you may find a Container shows signs of water leakage. This is expected as the PLA ages. This leakage can be easily addressed by applying a thin coat of butcherblock wax to the inside of the Outer Container. Eventually, you may need to replace the Outer Container.

Check your PotPerch regularly to ensure the Frame, Core and all Adapters, screws, and Containers remain tight and secure. If you notice movement, cracks in the walls or base, or loose fixings, remove the plants and reduce the load, then seek advice from a qualified person before using the system again.



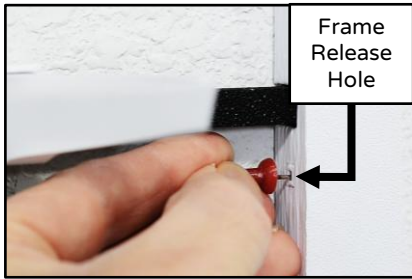


PotPerch™ Installation and Use Instructions

Removing / Changing your Frame.

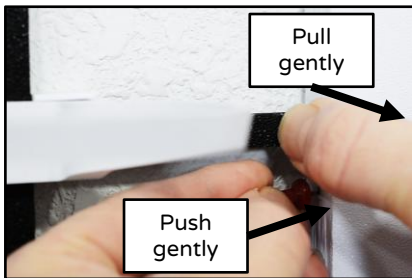
1. To remove your Frame, remove all plants and SipStations from their Pot Holders. You may need to remove any Pot Holders close to the Frame.

2. Place the tip of a push pin through one of the Frame Release Holes found on the inside face Frame.

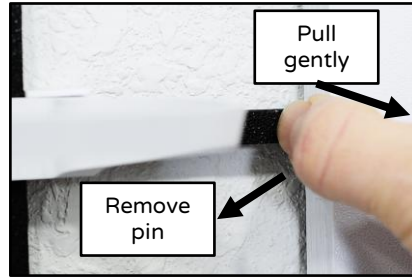


3. While pushing the Core gently against the wall close to the Frame Release Hole, use the pin to gently push the Frame Holder Catch.

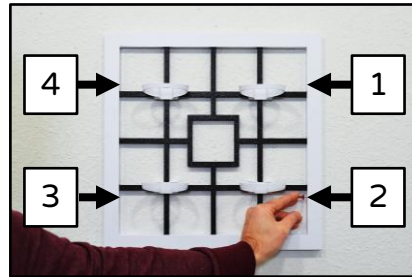
4. Gently pull on the Frame near to the Frame Release Hole.



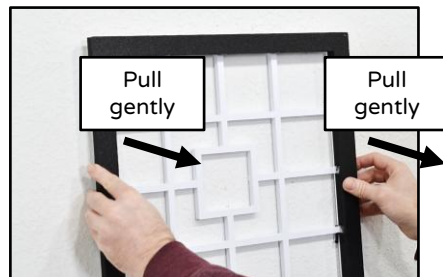
5. Once the Frame becomes slightly disengaged from the Core, remove the pin.



6. Working in a clockwise direction, move to the next Frame Release Hole (4 total). Repeat steps 2 through 4.



7. Once all 4 Frame Holder Catches have been released, slide the Frame straight off the Core.



8. It may be necessary to repeat steps 2 through 4 if a Frame Release Catch is still holding the Frame in place.